



TAD EF86 / 6267 Premium Select Low Noise AF Pentode

The **TAD™ EF86 / 6267** is a glass envelope miniature pentode for high-quality small signal amplification in sensitive input stages

The **TAD™ EF86 / 6267** is likewise suitable for many High-End-Audio devices and microphone preamps as well as the famous VOX AC amplifier line from the early 60's.

The **TAD™ EF86 / 6267** is a faithful reproduction in shape and tone of yesteryears EF86's.

Characteristics of a bogey tube:

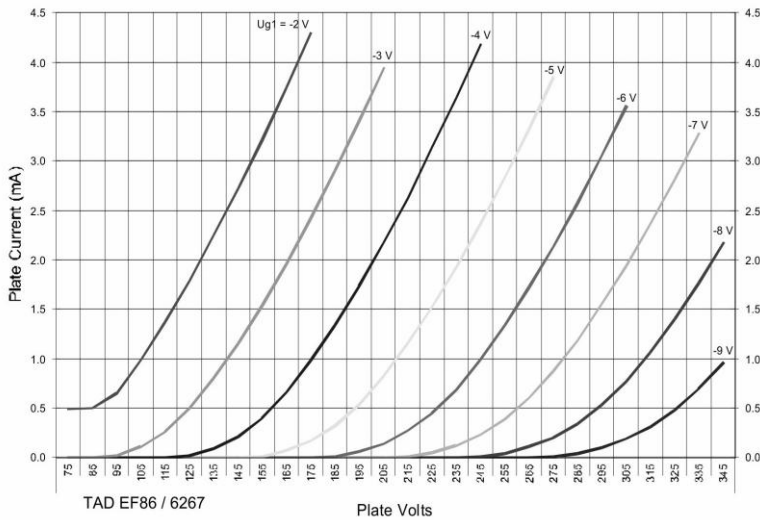
Electrical	
Heater Voltage (AC or DC) in Volts	6.3+/-0.5
Heater Current in mA	200+/- 10%
Heating	
	Indirect
Cathode-to-heater potential, max.	
Cathode positive:	100 V
Cathode negative:	50V
Direct interelectrode capacitances, max.***	
Grid 1 to all except plate	3.8 pF
Grid 1 to plate	0.05 pF
Plate to all except Grid 1	5.1 pF
Grid 1 to heater	0.0025 pF
Mechanical	
Operating Position	Any
Base	E9-1, Small Button 9 Pin
Dimensions:	
Height	55.6 mm
Seated height	49.2 mm
Diameter	22.2 mm
Cooling	conventional
Approximate net weight	15 g
***Without external shielding, nominal values	

AF Power Amplifier

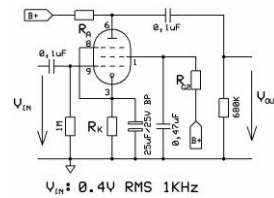
Maximum ratings	
DC plate voltage	300 V
Grid 2 voltage	200 V
Positive DC Grid Voltage	0 V
Negative DC Grid Voltage	-100 V
Plate dissipation	1.0 W
Grid 2 Dissipation	0.2 W
Bulb temperature (surface hottest point)	170°C
Cathode Current	6 mA

RT-EF86/6267 Pentode Connection								
B+ / V	R _A / kΩ	R _{G2} / kΩ	R _K / kΩ	V _{Out} / V _{RMS}	V _{Out} / V _{IN}	THD / %	I _A / mA	
200	100	390	1,00	40,3	100,8	4,0	1,5	
250	100	390	1,00	43,7	109,3	2,8	1,9	
300	100	390	1,00	46,4	116,0	2,3	2,4	
350	100	390	1,00	48,6	121,5	2,0	2,8	
400	100	390	1,00	50,6	126,5	1,8	3,3	
200	220	1000	2,20	50,3	125,8	8,0	0,7	
250	220	1000	2,20	57,0	142,5	6,5	0,9	
300	220	1000	2,20	61,4	153,5	5,5	1,1	
350	220	1000	2,20	65,3	163,3	5,0	1,3	
400	220	1000	2,20	68,4	171,0	4,5	1,5	

RT-EF86/6267 Triode Connection (G2 to Anode, G3 to Cathode)								
B+ / V	R _A / kΩ		R _K / kΩ	V _{Out} / V _{RMS}	V _{Out} / V _{IN}	THD / %	I _A / mA	
200	100		2,20	10,9	27,3	0,83	1,0	
250	100		2,20	11,0	27,5	0,64	1,2	
300	100		2,20	11,2	28,0	0,52	1,5	
350	100		2,20	11,3	28,3	0,44	1,7	
400	100		2,20	11,4	28,5	0,41	2,0	
200	220		3,90	11,6	29,0	1,00	0,5	
250	220		3,90	11,7	29,3	0,80	0,6	
300	220		3,90	11,8	29,5	0,60	0,8	
350	220		3,90	11,9	29,8	0,50	0,9	
400	220		3,90	12,0	30,0	0,40	1,0	

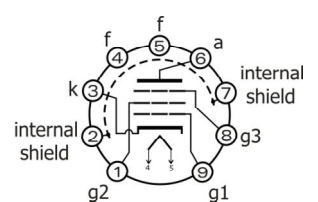


Test arrangement:



Bottom View

Octal Base Connections



Outline View

